



Natural Water Retention Measures

Web-based knowledge
Community of practice
NWRM practical guide



Pilot Project - Atmospheric Precipitation - Protection and efficient use of Fresh Water: Integration of Natural Water Retention Measures in River basin management


Service contract n°ENV.D.1/SER/2013/0010

2nd Baltic Regional Workshop

Natural Water Retention Measures (NWRM): upstream and downstream linkage for urban flood prevention in the Baltic Sea Region

**Hotel “Gimo Herrgård”
June 10-11, 2014**

Heidrun Fammler BEF



NWRM initiative

Launched by DG ENV in October 2013: “Integration of Natural Water Retention measures into River Basin Management”

Natural Water Retention Measures (NWRM) are measures that aim to safeguard and enhance the water storage potential of landscape, soils and aquifers, by restoring ecosystems, natural features and characteristics of water courses, and by using natural processes. They are Green Infrastructure solutions and they support adaptation reducing vulnerability of water resources.

NWRM pilot project

- Service contract funded by DG ENV
- 11 partners, 8 countries (FR, UK, HU, GR, CY, SE, ES, LV)
- From September 2013 to October 2014



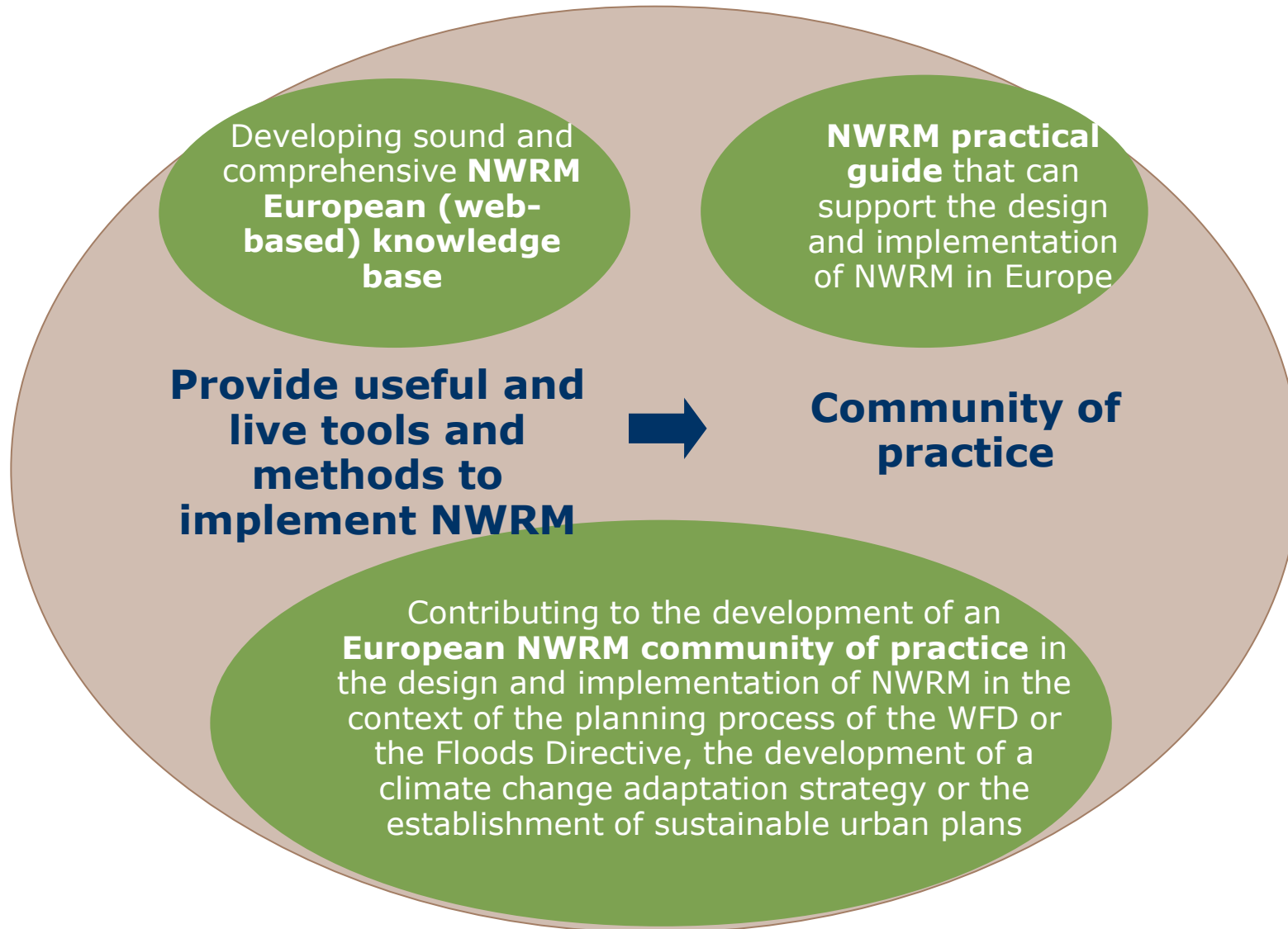
Office
International
de l'Eau



REGIONAL ENVIRONMENTAL CENTER




NWRM initiative: objectives & challenges





Main goal of the project

- **To support DG ENV with information by**
 - **Collecting cases for NWRM from EU27 countries**
 - **Participate in working groups on Programme of Measures for WFD and Floods Directive**
- **We all (including DG ENV) are at very early stage of use of NWRM**
- **Be assured, that DG ENV is really interested in how to use NWRM and seeks to get input – from the consortium and from you here!**



1st Baltic Regional Workshop on NWRM

Riga, 30-31 January 2014

Main discussion points:

- **What is the project about?**
- **What is NWRM?**
 - **Just a new fancy term? Do we actually use it unconsciously?**
- **How does it concern us in the Baltic Region having a lot of water and main interest to get rid of it?**
- **We talked about agriculture, forestry and, a bit, about urban environment and measures for NWRM in these sectors**

Our further developed thoughts

- **Thinking in sectors of economy/areas did not satisfy us, we thought to look deeper at the purpose of NWRM and came to conclusion to look at land uses:**
 - **Who is interested in NWR measures? Who can contribute with action?**
 - **Flooding we found as one focus to talk about**
 - **Especially the upstream/downstream relationship we consider as great potential to really apply NWRM and achieve results due to highest costs**
 - **Therefore we would like this workshop to focus on urban flood prevention and the interlink between upstream/downstream measures**



Our concept – your role

- **Project partners meet workshop guests**
- **YOU are the important input givers to our partners**
- **We will present you our ideas, we have invited guest speakers for some aspects of our focus theme and in working sessions we would like to benefit from your experience, your opinion and incorporate your ideas into the project**
- **You role: to contribute to our process**
- **Our service: nice location, smart community and, afterwards, good project outputs: guidance and deliverables for your future use!**

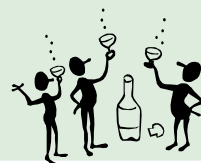
Ready for it? – ready for the agenda.

Agenda 10 June (1)

	Session 1: Upstream/downstream linkage for Urban Flood Risk Management
13:30	Keynote 1 – the concept: <ul style="list-style-type: none">• Maximizing the cost efficiency of flood risk management measures by matching urban benefits with rural costs for water retention by Dennis Collentine, Swedish University of Agriculture Sciences (SLU)
13:45	Keynote 2 – the problem: <ul style="list-style-type: none">• Urban Flooding: where does all the water come from? by Martyn Futter, Swedish University of Agriculture Sciences (SLU)
14:00	Keynote 3 - a paradigm shift: <ul style="list-style-type: none">• Moving from flood defence to water management by Thomas Hartmann, Utrecht University, the Netherlands
14:15	Plenary feedback on key notes Case studies: UK (Heather Williams, AMEC UK) Latvia (Kristina Veidemane, BEF LV)
15:00	Coffee break

Agenda 10 June (2)

15:30	Work groups: “Sources & management” (3 groups) <ul style="list-style-type: none">• How have measures to manage flood risk been determined?• How can the source rather than the direct impact be included in flood risk assessment?• What is the potential for using NWRM in rural areas to reduce flood risk?
17:00	Report from work group sessions Plenary discussion
17:45	Synthesis plenary discussion and wrap-up by Martyn Futter, The Swedish University of Agriculture Sciences (SLU)
Ca. 18:00	Closing of the day
19:30	Joint dinner



Agenda 11 June (1)

8.30	Introduction to the day by Heidrun Fammler, Baltic Environmental Forum
	Session 2, Using rural measures for urban flood risk management
8.40	Keynote 4 – the legal basis: how to work with both directives <ul style="list-style-type: none">Flood Risk Management Plans – the interlink between the Floods Directive and Water Framework Directive – a creative approach to the authorities' work by Iveta Teibe, Latvian MoE
9.00	Key note 5 – Legal framework for implementation: <ul style="list-style-type: none">Institutional obstacles ,problems and opportunities by Jakub Lewandowski, STARFLOODS project (FP7), Inst. for Agricultural and Forest Environment, PAS
9.30	Working with stakeholders in Spain to implement measures: Who should pay? by Gonzalo Delacámara, IMDEA, Spain
9.45	Case Study: Flood risk management in an urban environment in a transboundary catchment by Kai Deutschmann, Brandenburg & Ronald Eckert, Frankfurt/Odra

Agenda 11 June (2)

10.15	Work groups: “Creating the upstream/downstream linkage: potentials and possibilities”: what does DG ENV need to do and what do MS require to support impl. of NWRM? Including coffee
11.30	Report from work group sessions and plenary discussion
12.15	NWRM Guidance manual How can the Pilot Project guidance manual be designed to support implementation of NWRM? Who are the users, what do they need, what should be in the manual? by Pierre Stroesser (ACTeon)
12:45	Summary & Closing of the workshop by Heidrun Fammler, Baltic Environmental Forum
13:00	Lunch
XXX	Departure by bus to Arlanda Airport or Uppsala