



Natural Water Retention Measures

Examples from the Netherlands

Provincie Noord-Brabant

Frank van Lamoen
Szentendre, 28 January 2014
fvlamoen@brabant.nl



Welcome to Brabant

5.081 km² total area
165 km² water area
2.500.000 inhabitants

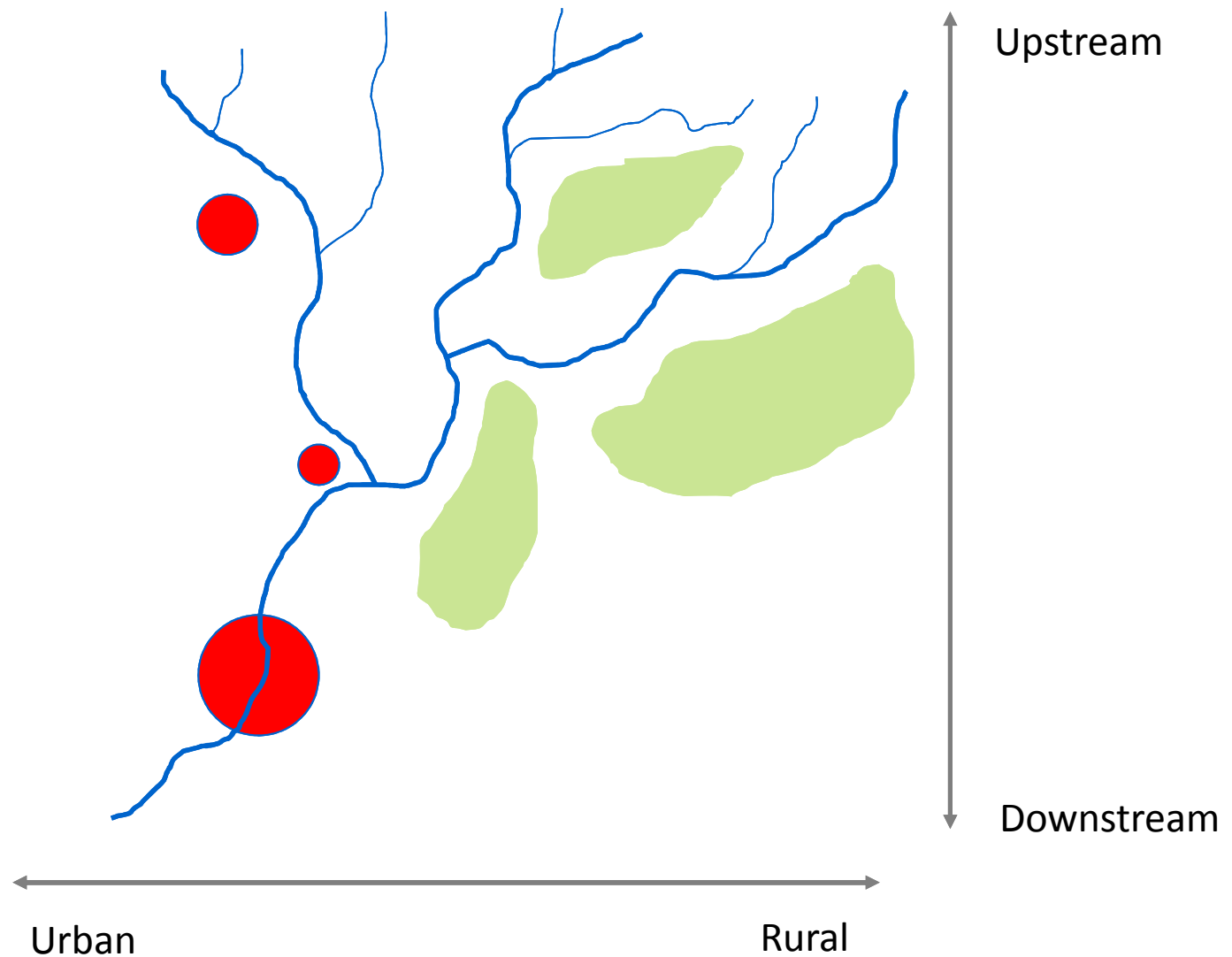
1 regional government
4 waterboards
67 municipalities
1 water company

21 Natura 2000 areas
106 WFD water bodies
39 drinking water extractions

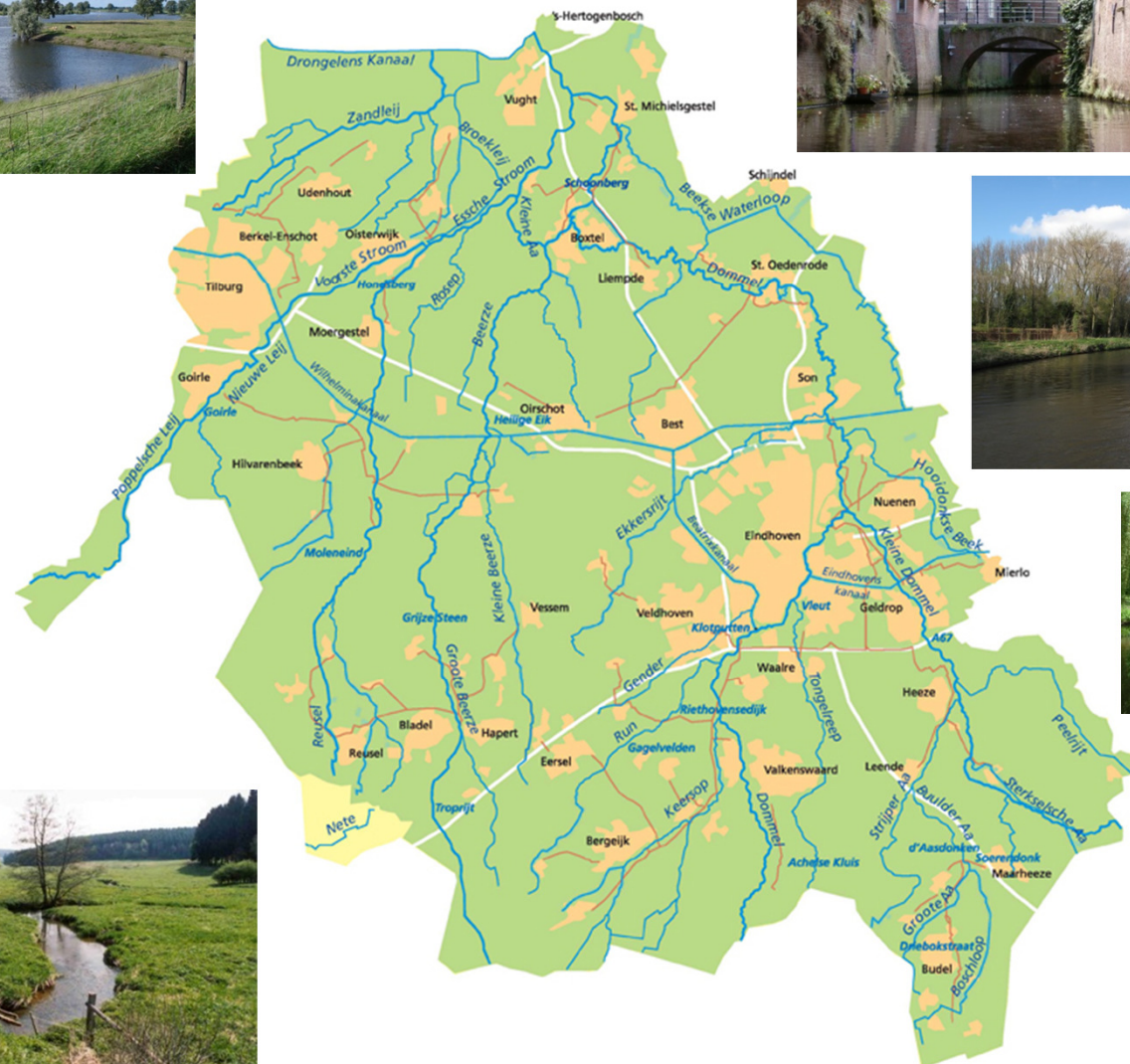




Where to retain water in the system?



Example: The Dommel area in Brabant



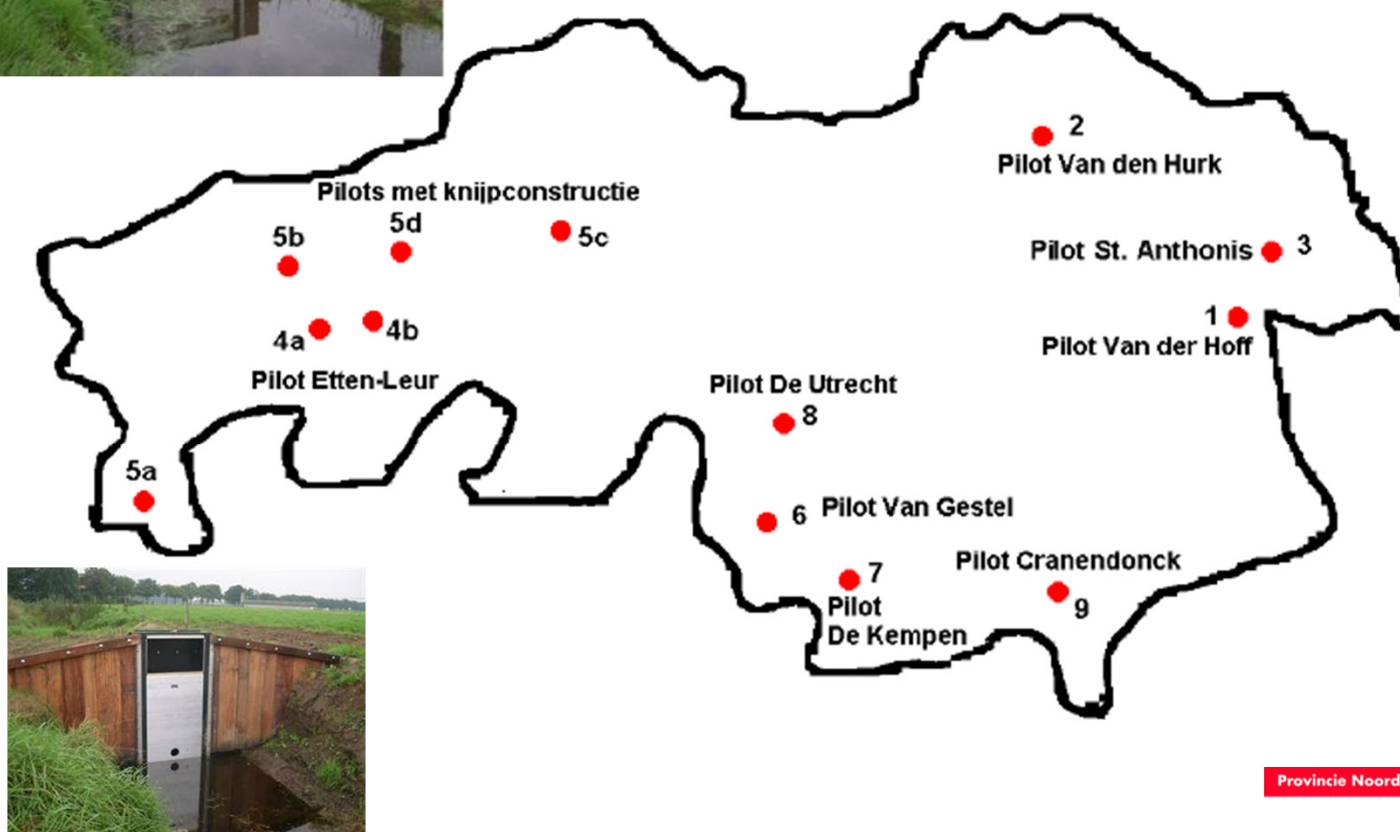
Need for water retention



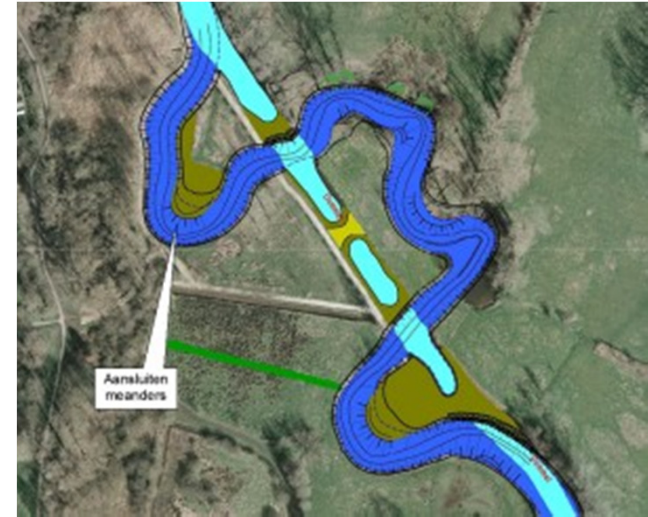
Balancing between too much and too little



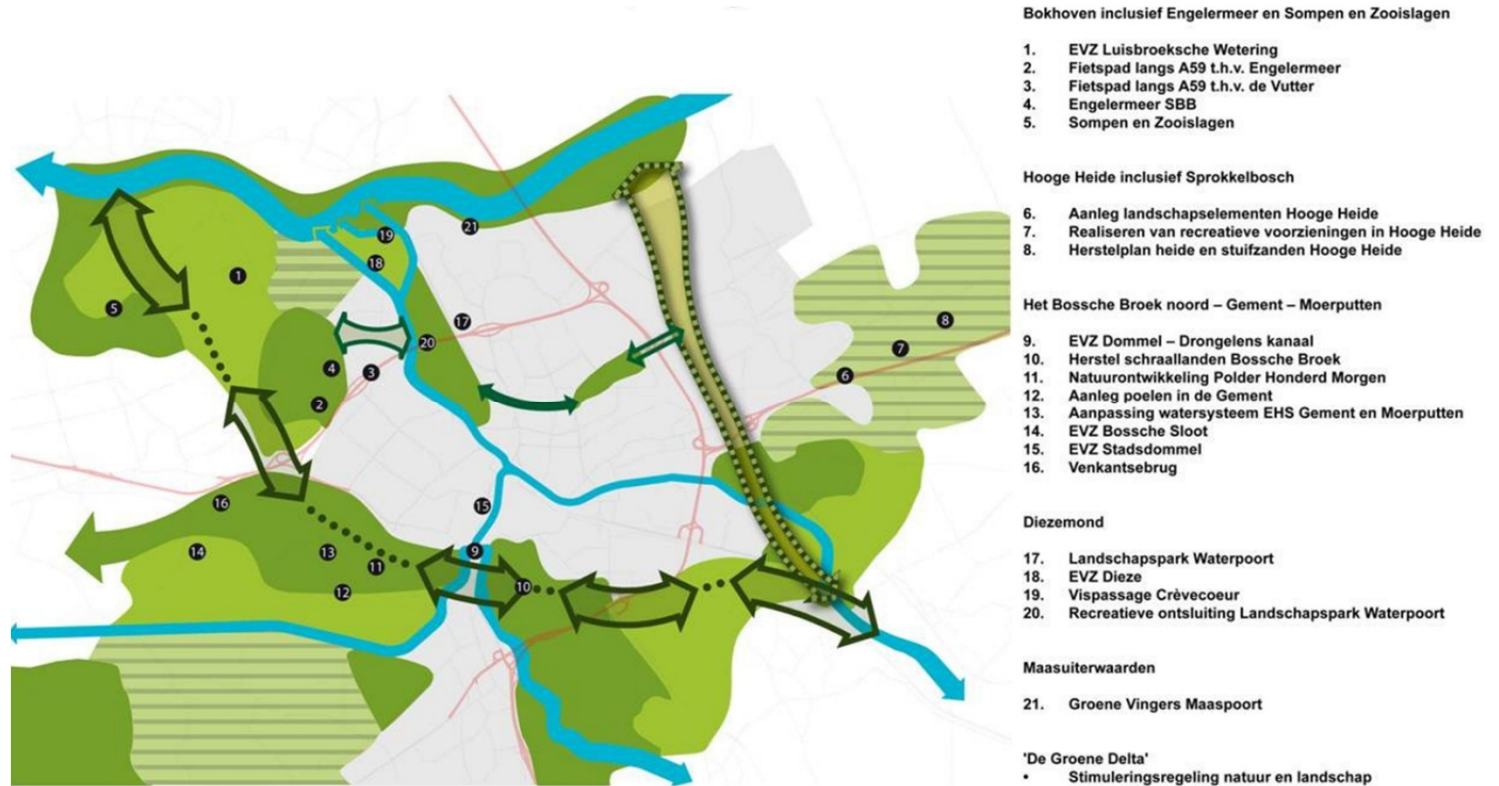
Upstream retention



Restoring brook systems



The Green Delta



Water retention, nature conservation and preservation of cultural heritage around the city of 's-Hertogenbosch



Bossche Broek



Former defence line
as water retention
area



Urban retention



Eindhoven



's-Hertogenbosch



Tilburg



Breda



House of the Province



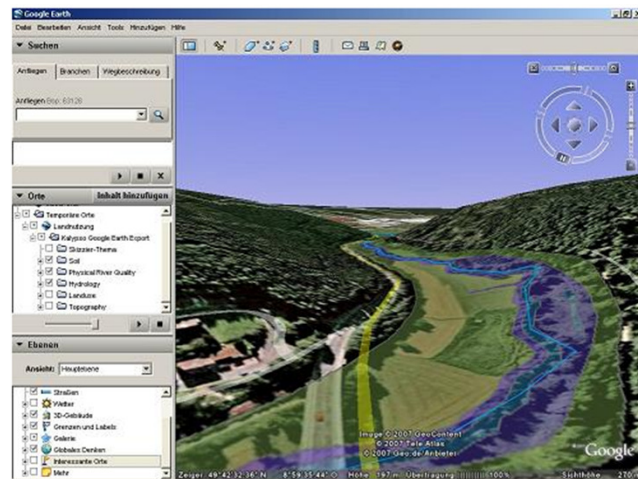
Storing and using rainwater in the pond



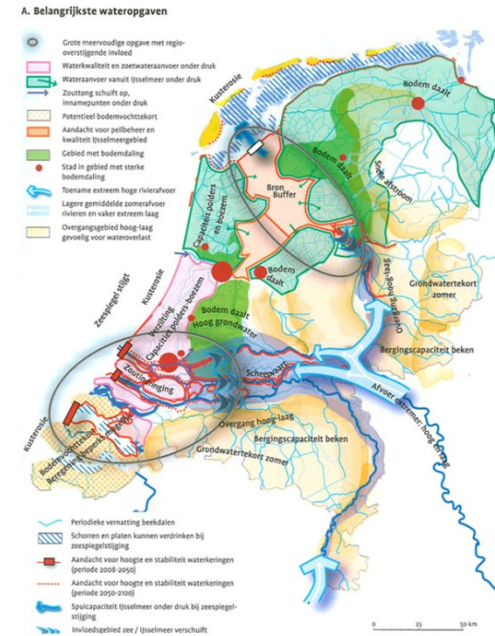
Related projects



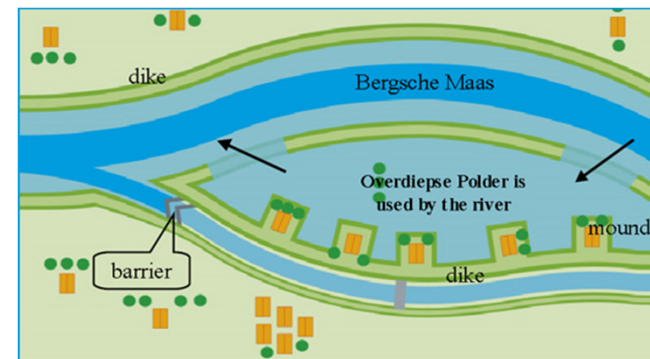
WaterCoRe / EIP



Nature Orientated Flood
Damage Prevention



Deltaprogramme



Room for the River



Questions?

