



UNIUNEA EUROPEANĂ
Fondul European de
Dezvoltare Regională



GUVERNUL ROMÂNIEI



Instrumente Structurale
2007 - 2013

PROGRAMUL OPERAȚIONAL SECTORIAL „MEDIU”
Proiect „RECONSTRUCȚIA ECOLOGICĂ A BĂLȚII COMANA - JUDEȚUL GIURGIU” - Cod SMIS-CSNR 6725

ECOLOGICAL RESTORATION OF COMANA WETLANDS - GIURGIU COUNTY COD SMIS - CSNR 6725

This material does not represent the official position of the European Union or the Romanian Government




1

PROJECT FINANCES

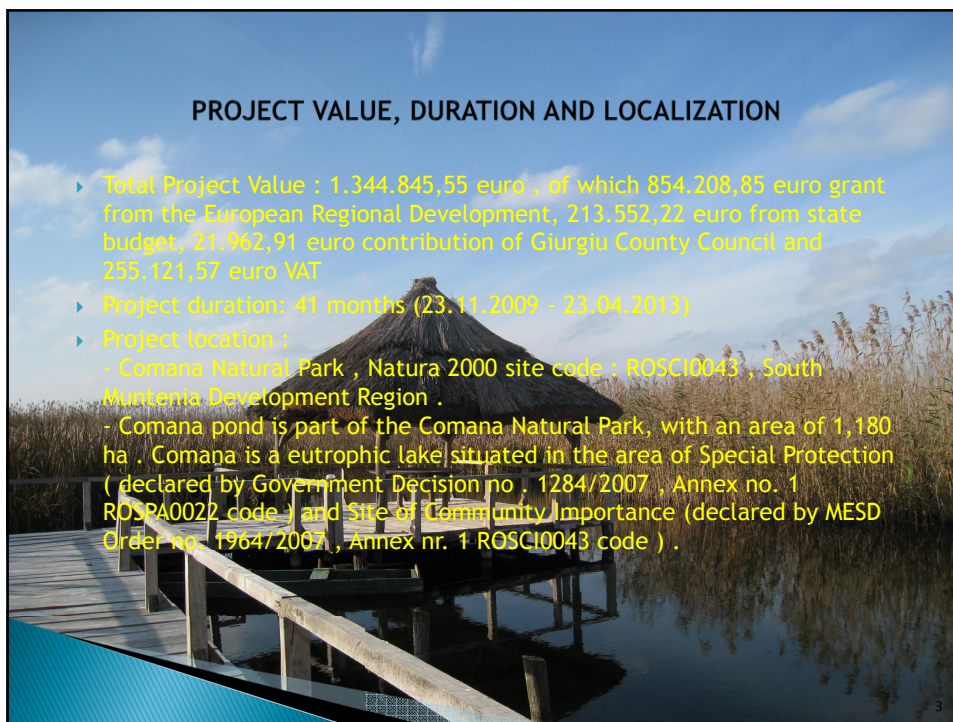
- ▶ Sectorial Operational Programme "Environment" 2007 - 2013
- ▶ Priority Axis 4 - Implementation of adequate management systems for nature protection
- ▶ Key area of intervention - Infrastructure development and management plans to protect biodiversity and Natura 2000 network

Programul Operațional Sectorial "Mediu" 2007 - 2013

- ▶ Applicant : Giurgiu County Council
- ▶ Partners: Natural Park Administration Comana and Comana City Council



2



PROJECT VALUE, DURATION AND LOCALIZATION

- ▶ Total Project Value : 1.344.845,55 euro , of which 854.208,85 euro grant from the European Regional Development, 213.552,22 euro from state budget, 21.962,91 euro contribution of Giurgiu County Council and 255.121,57 euro VAT
- ▶ Project duration: 41 months (23.11.2009 - 23.04.2013)
- ▶ Project location :
 - Comana Natural Park , Natura 2000 site code : ROSCI0043 , South Muntenia Development Region .
 - Comana pond is part of the Comana Natural Park, with an area of 1,180 ha . Comana is a eutrophic lake situated in the area of Special Protection (declared by Government Decision no . 1284/2007 , Annex no. 1 ROSRA0022 code) and Site of Community Importance (declared by MESD Order no . 1964/2007 , Annex nr. 1 ROSCI0043 code) .

PROJECT OBJECTIVE

Main Objective:

- ▶ Conservation of biological diversity, natural habitats, wild flora and fauna as well as efficient management of protected areas , and in particular the Natura 2000 ecological network through reconstruction of Comana Pond - Giurgiu County

Specific Objectives:

- ▶ Protection , conservation and enhancement of flora and fauna biodiversity of exceptional value existing within the wetland - Comana Pond - part of Comana Natural Park
- ▶ Implement a system to monitor the evolution of the environment and wildlife in this wetland, with a delta profile
- ▶ Increase awareness of visitors and local communities on environmental protection and promoting best practice in biodiversity conservation

Project Activities

- ▶ Construction of a pavilion for information and monitoring
- ▶ Implementation of a small dam to achieve a permanent retention rate of 43.60 mMB at Comana pond
- ▶ Specific facilities for lake-side activities, such as walkways, bridges and signal indicators
- ▶ Developing an ornithological observatory network
- ▶ Monitoring System of bird species and environmental factors
- ▶ Consultation activities, awareness and information.



5

B. Investment in infrastructure for public use oriented towards environmental protection and management in protected areas

Activity B.1. Construction of a Pavilion for information and monitoring

The Building, with rectangular plane, occupy a ground area of 228 sqm.

The building have two levels:

- Ground floor with an area of about 170 square meters,
- The attic with an area of approximately 45 square meters .

Monitoring and Information Pavilion :

- will serve as a visitor center, information and monitoring of activities in the area ,
- through the central dispatcher monitoring system , this is the place to store information from the "ground"
- headquarters for meetings, conferences, staff training and exhibitions for visitors
- At the end of the project, it will be given, free of charge, to the use of Comana Natural Park Administration .



6

B. Investment in infrastructure for public use oriented towards environmental protection and management in protected areas

Activity B.2 . Specific facilities for lake-side activities

The alleys provide access, built of stone, 1.5 m wide , between local roads, as well as site observation and walkway access to the lake.

Access walkway was made of wood with metal stiffeners (connectors) on hardwood poles or metal.

Have been achieved :

- ▶ 1,000 m walkways
- ▶ 50 m of walkways
- ▶ 24 indicators signalling
- ▶ Creating conditions for access to specialists in areas of interest on biodiversity, for making direct observations.
- ▶ Ensuring controlled and safe access for visitors, accompanied by park personnel or certified guides.



B. Investment in infrastructure for public use oriented towards environmental protection and management in protected areas

Activity B.3 . Developing an ornithological observatory network

Observatories are built of fireproof wood treated with antibacterial substances and waterproof and sun proof varnishes. Design parameters for observer are:

- ▶ plan dimensions are 3 x 3 m,
- ▶ The maximum building height : + 8.20 m
- ▶ 4 ornithological observatories equipped for monitoring and research, complete with eco toilets
- ▶ support research of Comana Pond
- ▶ following the evolution of different protected species
- ▶ progress monitoring environmental parameters



C. Activities relating to maintaining and improving the favourable conservation status of habitats (Natura 2000 sites and protected areas)

Activity C.1. Executing a dam of small height

- ▶ was obtained a permanent retention level in Comana Pond of 43.60 MMB
- ▶ dam is equipped with high waters spillway, which will have a length of 525 m and a height of 0.80 m, located between 44.15 and 45.00 MMB shares.
- ▶ dam crest is projected for a level of 45.00 MMB
- ▶ depending on the weather conditions at the end of the ecological restoration project Comana Pond will regain a minimum of 30 % of the surface area of the original Marsh
- ▶ improving habitat for protected species characteristic of a surface area of at least 30% of the original Marsh
- ▶ protected species increase at least 5 %. Initially there were 157 species, and after project implementation were inventoried 212 species, of which 78 species protected at national and European level. Also increased population size of species.



9

C. Activities relating to maintaining and improving the favourable conservation status of habitats (Natura 2000 sites and protected areas)

Activity C.2. Monitoring Comana Pond

To ensure the monitoring of controlled areas of great interest to developed a monitoring system composed of multiple devices at the 4 ornithological observatories.

To ensure the monitoring of controlled areas of great interest to developed a monitoring system composed of multiple devices at the 4 ornithological observatories.

Thus, the flag is received and processed data from each observer with a suitable program to a central dispatch which will be equipped with 1 PC computer, including software license, one soft dispatcher 1 overall pattern of distribution TGD, one video digital recorder to record video and one dispatcher switchboard TCD.

The power supply is local by photocells and sensors for receiving information about the presence of birds.

Two ornithological observatories and weather stations are fitted for taking environmental factors: temperature, humidity, precipitation.



10

E. Consultation activities, awareness and information

A caravan to promote biodiversity

► The key message: ***"Protecting biodiversity = protect life"***

This activity took place in all areas of Giurgiu. There were 1,336 people, representatives of the local authorities, students, teachers.

- T-shirts were distributed, caps, pens, flyers and posters. All materials were printed and made in the project.
- one realized newsletter



11

E. Consultation activities, awareness and information

Thematic Seminar organized on "Earth Day"

- Key messages: ***"Protecting biodiversity = protection of life"*** and ***"Teaching both the youth and the local community about the importance of protecting the environment"***
- 30 participants
- one realized newsletter



12

E. Consultation activities, awareness and information

Thematic Seminar organized on "Environment Day"

- ▶ Key messages: *"Protecting biodiversity = protection of life" and "Teaching both the youth and the local community about the importance of protecting the environment"*
- ▶ 30 participants
- ▶ one realized newsletter



13

E. Consultation activities, awareness and information

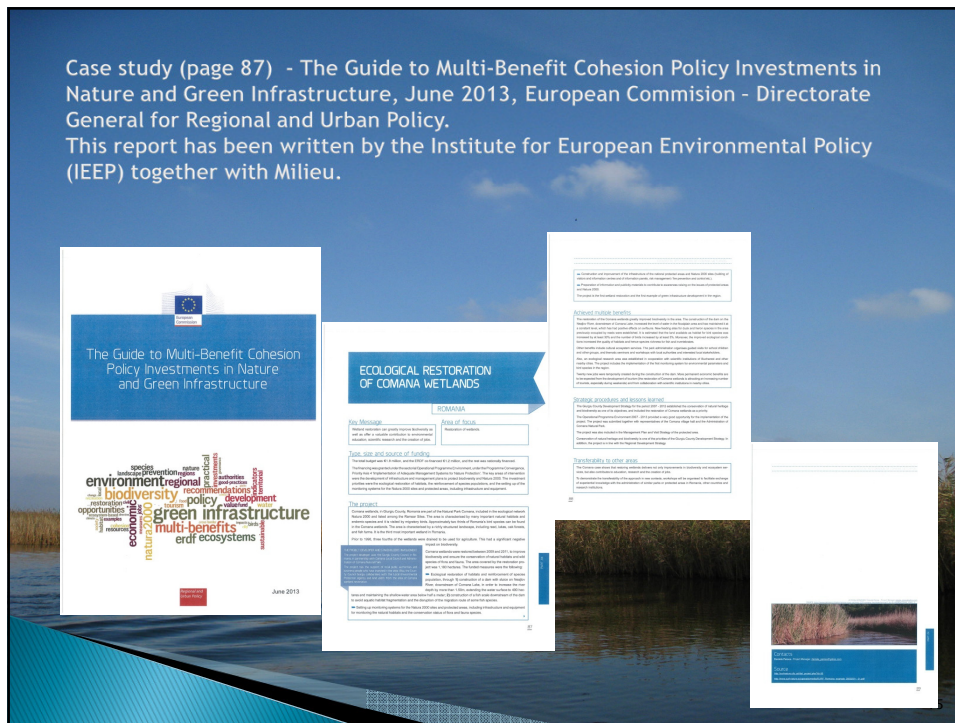
Roundtable to strengthen the capacity and improve cooperation between local authorities and stakeholders in the natural park Comana to protect ecosystems and responsible management.

- ▶ Key messages: *"Teaching both the youth and the local community about the importance of protecting the environment"*
- ▶ 25 participants
- ▶ one realized newsletter



14

Case study (page 87) - The Guide to Multi-Benefit Cohesion Policy Investments in Nature and Green Infrastructure, June 2013, European Commission - Directorate General for Regional and Urban Policy.
This report has been written by the Institute for European Environmental Policy (IEEP) together with Milieu.





Thanks for your attention!

Daniela Peicea - Project manager

Department for project management, interregional cooperation and partnerships
Directorate for Interregional Cooperation, Strategies and Projects

GIURGIU COUNTY COUNCIL

Giurgiu City, București street, no. 10, postal code 080045, Giurgiu County

phone: 0372 462 646, fax: 0372 462 670

e-mail: peicea.daniela@cjgiurgiu.ro

web site: www.cjgiurgiu.ro

